

as sung in Lichfield Cathedral

THREE SEVENTEENTH CENTURY SETTINGS OF

The Litany

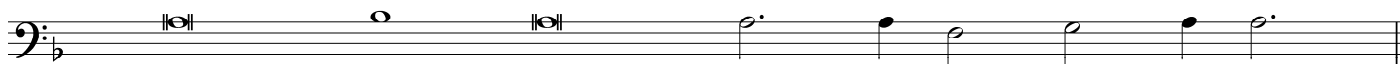
edited by John B. Lott, Mus.B. (Oxon.), Organist of Lichfield Cathedral

Number 2 – set to music in D minor by

HENRY LOOSEMORE, MUS.B. (CANTAB.)

Organist of King's College, Cambridge (1627–1670)

edited by Richard Shakeshaft



O God, the Father of Heaven : have mercy upon us mis - er - a - ble sin - ners.

A grand staff in D minor with a common time signature. The vocal line is in the treble clef, and the piano accompaniment is in the bass clef. The vocal line starts with a whole note, followed by a half note, and then a quarter note. The piano accompaniment consists of chords. Dynamics include *f* and *mf*. The text is: "O God, the Fa - ther of Heaven : have mer - cy up - on us mis - er - a - ble sin - ners." The piano part has a similar rhythm to the vocal line.



O God, the Son, Redeemer of the world : have mercy upon us mis - er - a - ble sin - ners.

A grand staff in D minor with a common time signature. The vocal line is in the treble clef, and the piano accompaniment is in the bass clef. The vocal line starts with a whole note, followed by a half note, and then a quarter note. The piano accompaniment consists of chords. Dynamics include *f* and *mf*. The text is: "O God the Son, Re - deem - er of the world : have" The piano part has a similar rhythm to the vocal line.

A grand staff in D minor with a common time signature. The vocal line is in the treble clef, and the piano accompaniment is in the bass clef. The vocal line starts with a whole note, followed by a half note, and then a quarter note. The piano accompaniment consists of chords. Dynamics include *f* and *mf*. The text is: "mer - cy up - on us mis - er - a - ble sin - ners." The piano part has a similar rhythm to the vocal line.